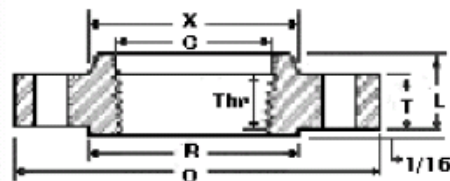
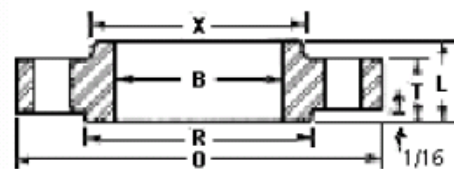


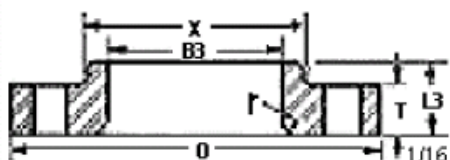
Weld Neck



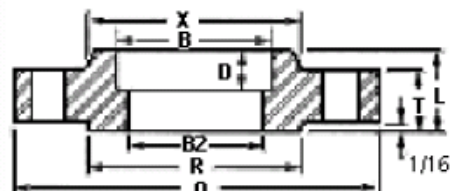
Threaded



Slip-On



Lap Joint



Socket Weld



Blind

Nom. Pipe Size	O	T ₁	R	X	No.2 & Dia. of Holes	Bolt Circle Dia.	L ₂ ¹	H	B ₂ ³	L	B	r	L ₃ ⁴	B ₃	D	C	Thr
½	3.75	0.56	1.38	1.5	4-0.62	2.62	2.06	0.84	0.62	0.88	0.88	0.12	0.88	0.9	0.38	0.93	0.62
¾	4.62	0.62	1.69	1.88	4-0.75	3.25	2.25	1.05	0.82	1	1.09	0.12	1	1.11	0.44	1.14	0.62
1	4.88	0.69	2	2.12	4-0.75	3.5	2.44	1.32	1.05	1.06	1.36	0.12	1.06	1.38	0.5	1.41	0.69
1¼	5.25	0.75	2.5	2.5	4-0.75	3.88	2.56	1.66	1.38	1.06	1.7	0.19	1.06	1.72	0.56	1.75	0.81
1½	6.12	0.81	2.88	2.75	4-0.88	4.5	2.69	1.9	1.61	1.19	1.95	0.25	1.19	1.97	0.62	1.99	0.88
2	6.5	0.88	3.62	3.31	8-0.75	5	2.75	2.38	2.07	1.31	2.44	0.31	1.31	2.46	0.69	2.5	1.12
2½	7.5	1	4.12	3.94	8-0.88	5.88	3	2.88	2.47	1.5	2.94	0.31	1.5	2.97	0.75	3	1.25
3	8.25	1.12	5	4.62	8-0.88	6.62	3.12	3.5	3.07	1.69	3.57	0.38	1.69	3.6	0.81	3.63	1.25
3½	9	1.19	5.5	5.25	8-0.88	7.25	3.19	4	3.55	1.75	4.07	0.38	1.75	4.1		4.13	1.44
4	10	1.25	6.19	5.75	8-0.88	7.88	3.38	4.5	4.03	1.88	4.57	0.44	1.88	4.6		4.63	1.44
5	11	1.38	7.31	7	8-0.88	9.25	3.88	5.56	5.05	2	5.66	0.44	2	5.69		5.69	1.69
6	12.5	1.44	8.5	8.12	12-0.88	10.62	3.88	6.63	6.07	2.06	6.72	0.5	2.06	6.75		6.75	1.81
8	15	1.62	10.62	10.25	12-1.00	13	4.38	8.63	7.98	2.44	8.72	0.5	2.44	8.75		8.75	2
10	17.5	1.88	12.75	12.62	16-1.12	15.25	4.62	10.75	10.02	2.62	10.88	0.5	3.75	10.92		10.88	2.19
12	20.5	2	15	14.75	16-1.25	17.75	5.12	12.75	12.00	2.88	12.88	0.5	4	12.92		12.94	2.38
14	23	2.12	16.25	16.75	20-1.25	20.25	5.62	14	13.25	3	14.14	0.5	4.38	14.18		14.19	2.5
16	25.5	2.25	18.5	19	20-1.38	22.5	5.75	16	15.25	3.25	16.16	0.5	4.75	16.19		16.19	2.69
18	28	2.38	21	21	24-1.38	24.75	6.25	18	17.25	3.5	18.18	0.5	5.12	18.2		18.19	2.75
20	30.5	2.5	23	23.12	24-1.38	27	6.38	20	19.25	3.75	20.2	0.5	5.5	20.25		20.19	2.88
22	33	2.63	25.25	25.25	24-1.63	29.25	6.5	22	21.25	4.00	22.22	0.5	5.75	22.25		22.19	3.13
24	36	2.75	27.25	27.62	24-1.62	32	6.62	24	23.25	4.19	24.25	0.5	6	24.25		24.19	3.25

Dimensions in inches.